

Demonstration : Wireless LAN plus Features summary of HP nc4200 notebook

Wellesley Leung

31-March-2006

2:30 to 3:30

Run down

1. Overviews the HP notebook

- Indicators
- Interface
- Buttons and shortcut.
- Power management
- Internet

Run down (cont')

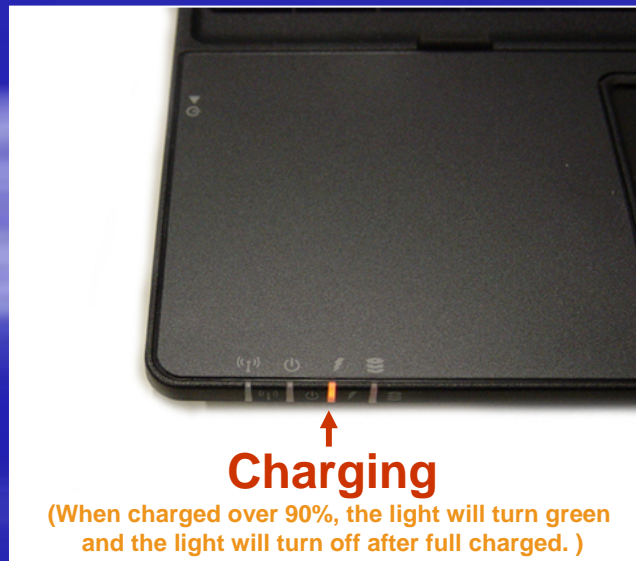
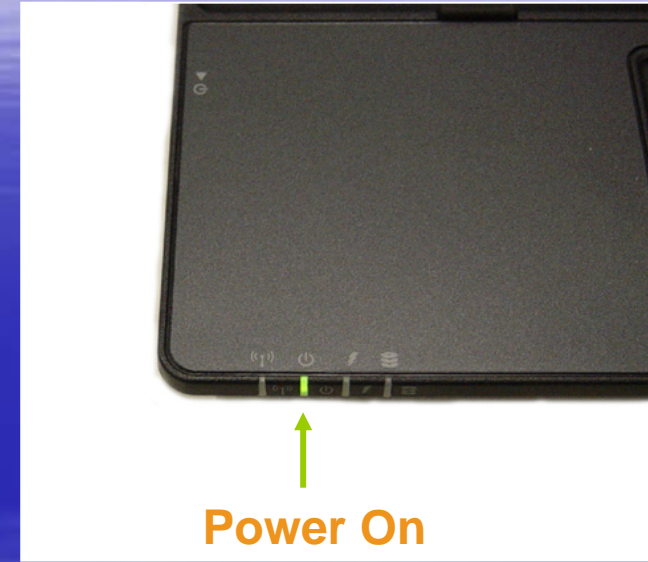
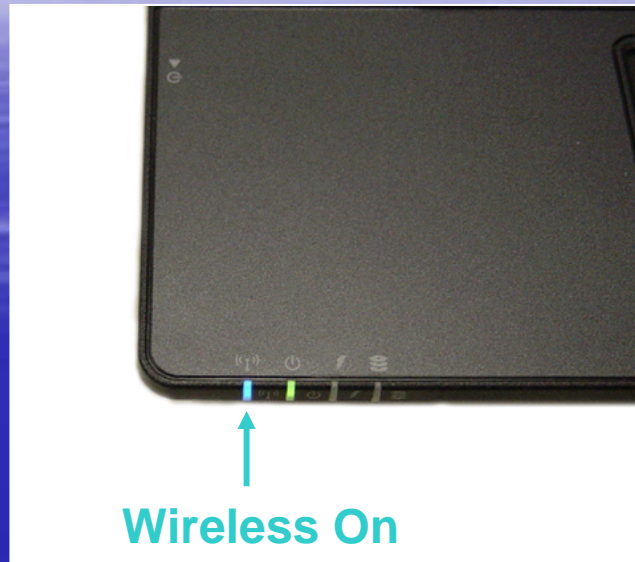
2. How to connect notebook to printer though infrared.
3. Using RecordNow software to burn CD.
(Demo)
4. Using InterVideo WinDVD to play VCD/DVD
(Demo)
5. Using wireless LAN in HTB 301 (HTB 201 and HTB 213) (Demo)
6. How to use wireless LAN in the CU campus

Overviews the HP notebook

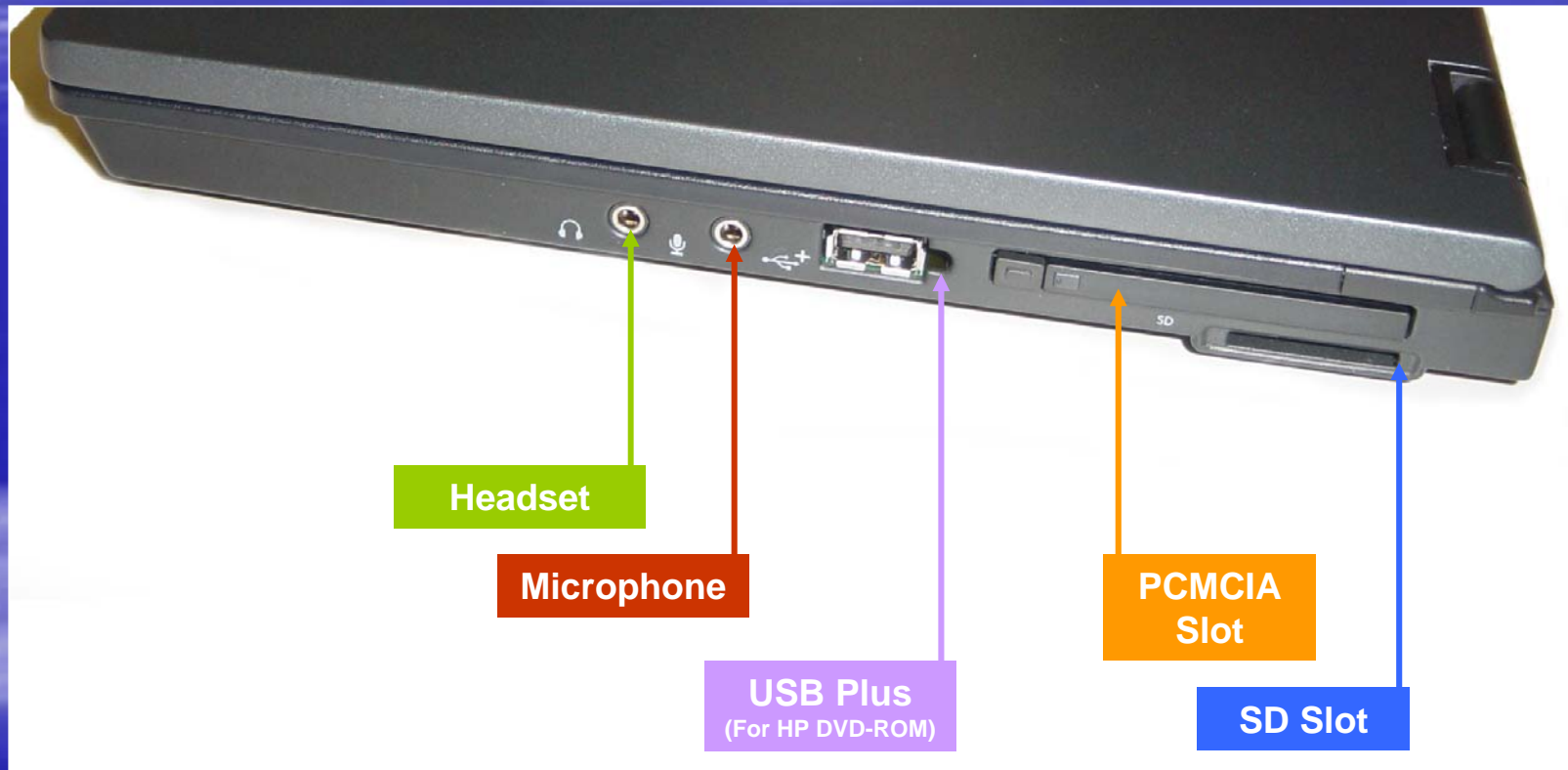
Indicators



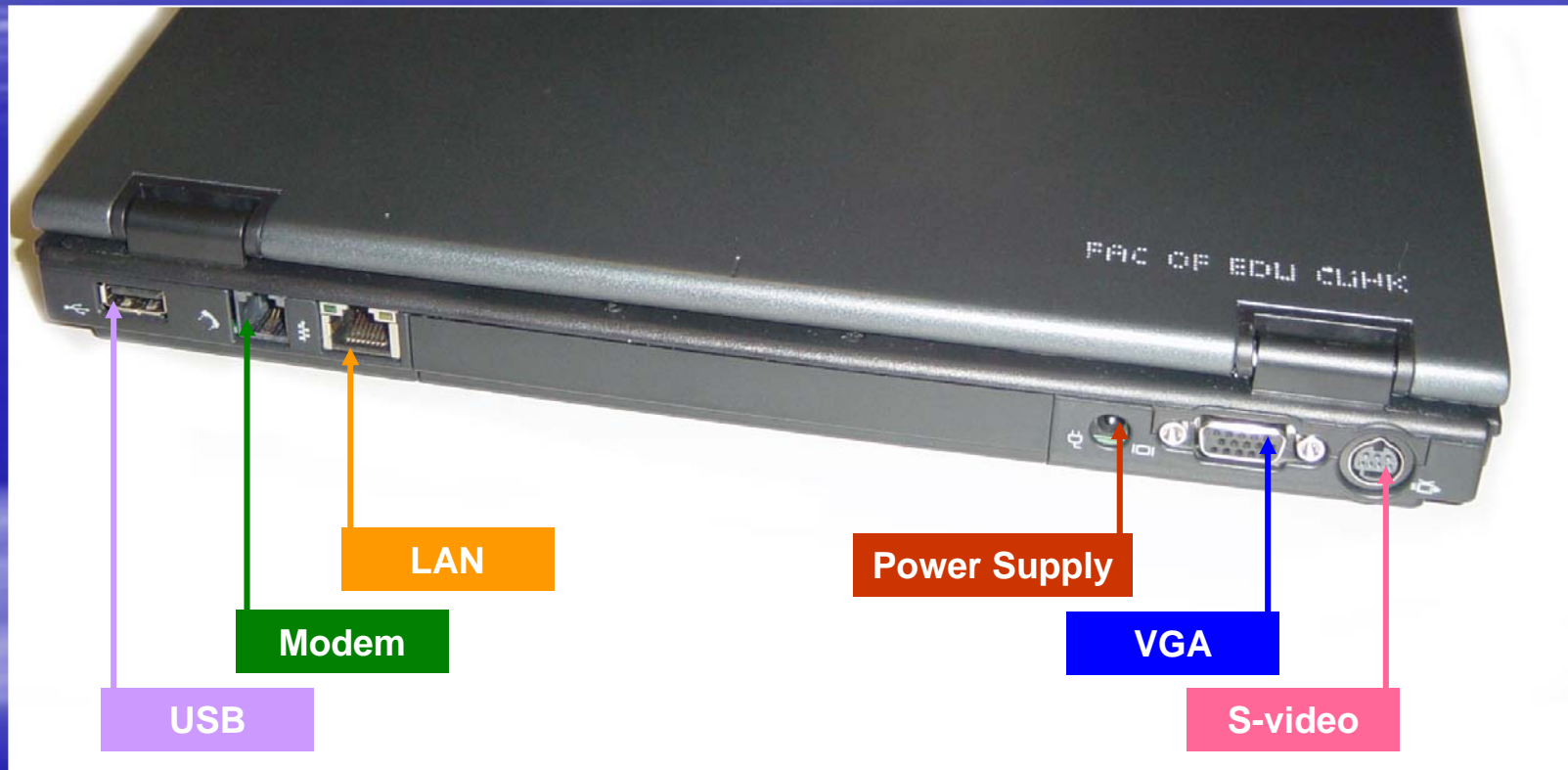
Indicators (cont')



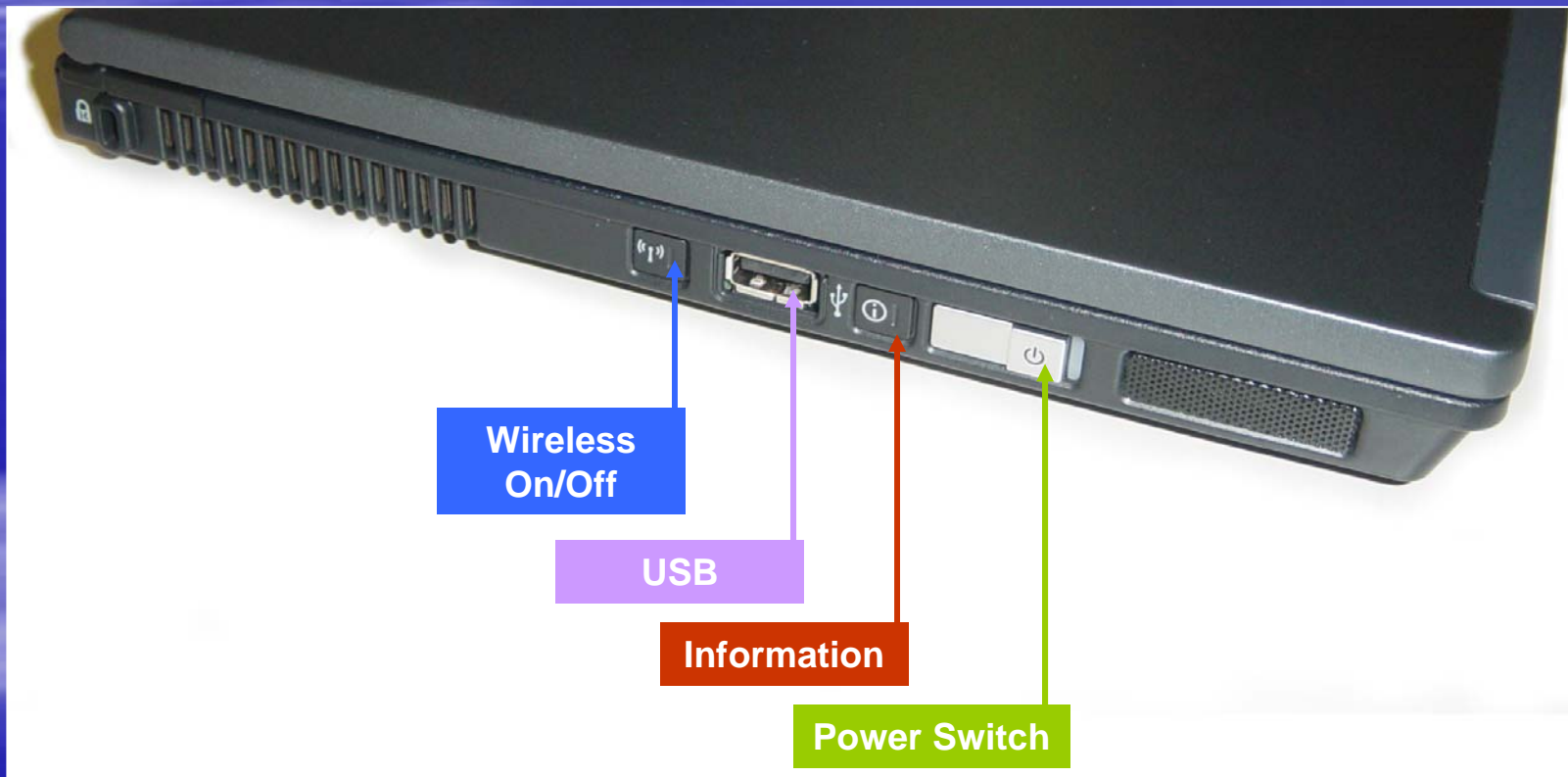
Interfaces



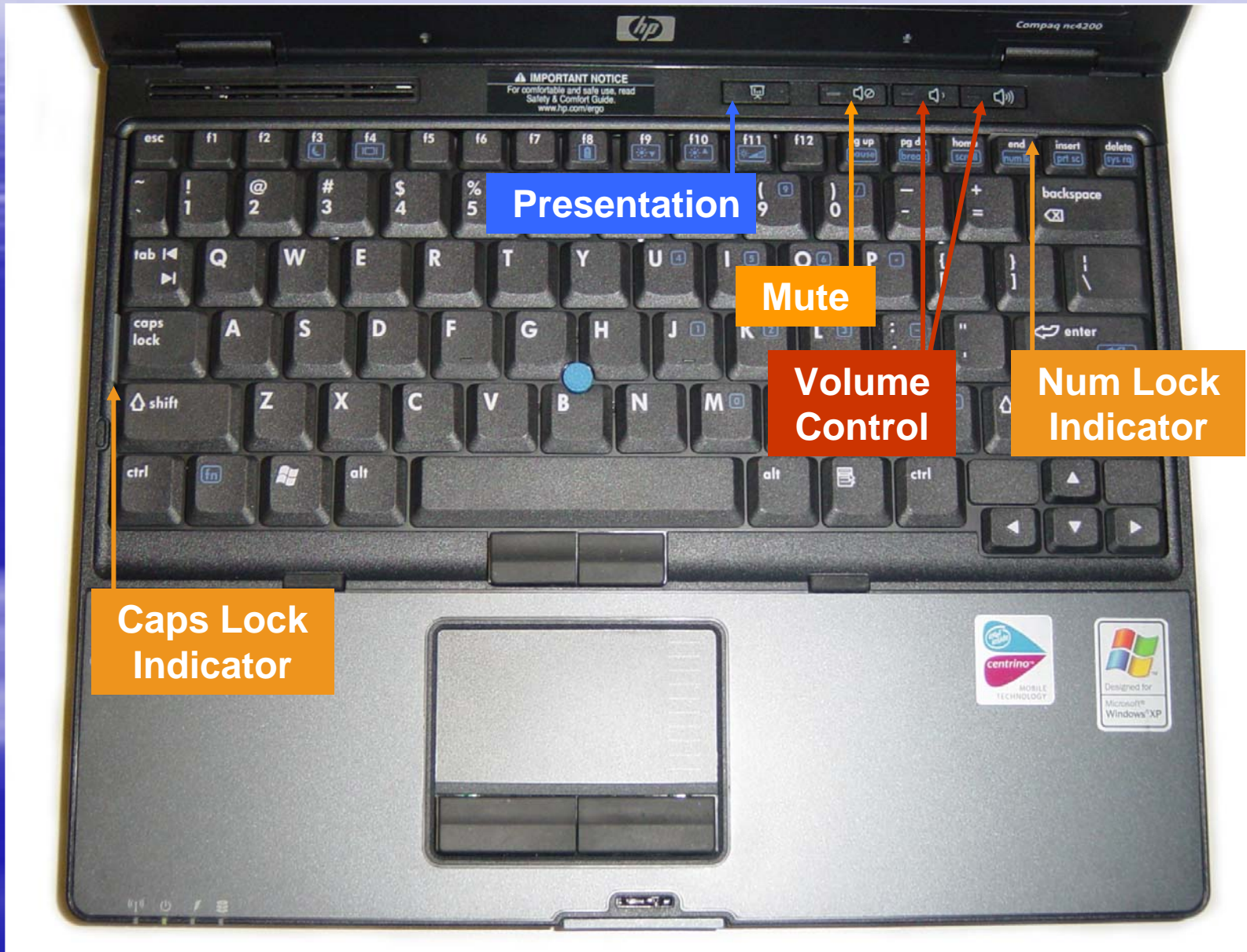
Interfaces (cont')



Interfaces (cont')



Buttons and shortcut



Power management

The length of time your battery will power your device depends on how you use it. For instance, watching a DVD will use up your notebook battery's power (about 1 hour) more quickly than simple word processing (about 2 to 3 hours).

- **Brightness:**
 - Dim the screen to the lowest comfortable level to achieve maximum battery life. By default, the brightness will be set to lower level without the power adapter.
- **Wireless LAN:**
 - Wireless LAN consumes power, even if you are not using its features to connect to a network. You can turn it off to save power.
- **Applications and peripherals:**
 - Disconnect peripherals (e.g: DVD driver, USB HD etc) and quit applications not in use.

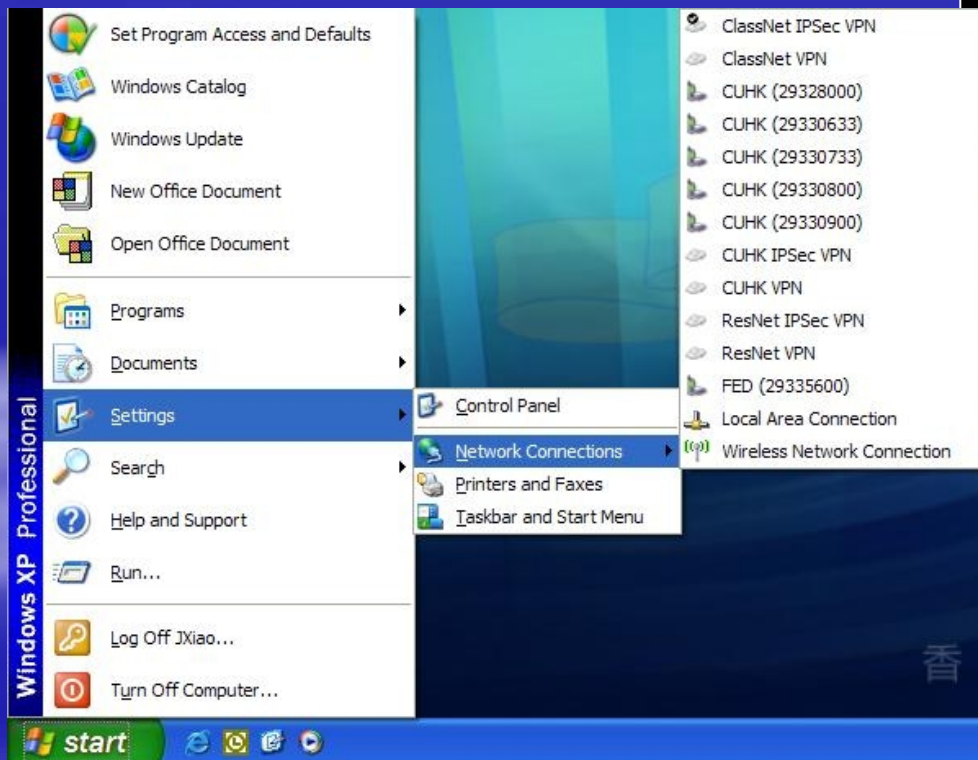
Internet

Dial-up Methods for Modem Connections



1. Plug the modem cable into the modem connector.

2. Click “Start” -> “Settings”
-> “Network Connections”.
You will see a list of
telephone number that
created before. Choose the
telephone number you
want to use.

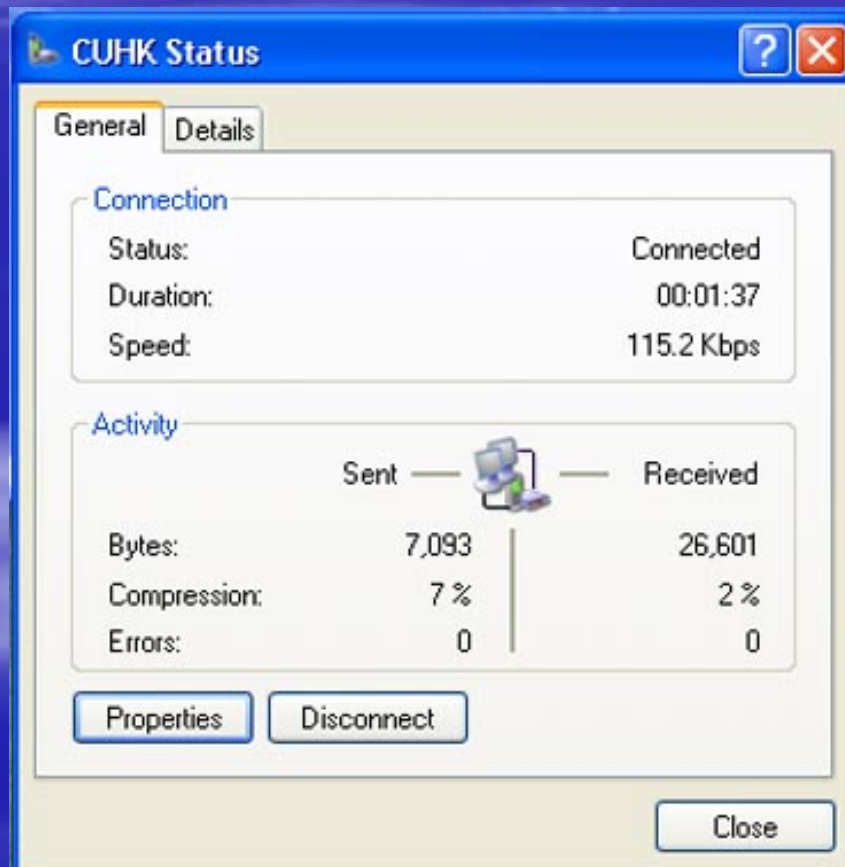
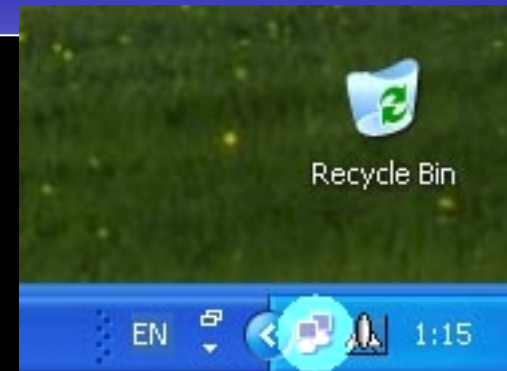


3. A "Connect xxx..." dialogue box will show up,

- Type your username in the user name box.
- For the Password, type your password on Campus-wide E-mail System -- mailserv.
- If you want to save the password, check the box beside "Save this user name"
- Then click Dial



4. Eventually you can get connect to CUHK/FED using PPP connection. To verify, you can see the Connected icon in the system tray located at the bottom right-hand-side.



5. To disconnect the connection.
- Double click the Connected icon in the system tray located at the bottom right-hand-side.
 - A connection status windows will show up.
 - Click “Disconnect” button to disconnect the connection.

Preload links in IE

There are many useful links created in the IE.



<http://serverb.fed.cuhk.edu.hk/exchange>

How to connect notebook to printer through infrared

1. Power on the HP Notebook and the printer.
2. Place the infrared port opposite to the printer's infrared port (note: the distance between 2 devices cannot be too far and blocked)
3. The HP Notebook will detect the printer and install printer driver automatically. The LED indicator of the printer's infrared port will show in green.
4. After installation, you can print with the infrared function.

Note: As the speed limitation of infrared, be aware that large file size may takes long printing time.

Using the RecordNow software to burn CD. (Cont')



1. Insert blank CD-R/CD-RW into DVD device. A select software windows will show up. Select "Add files. Using Sonic RecordNow"

2. The Sonic RecordNow will show up.



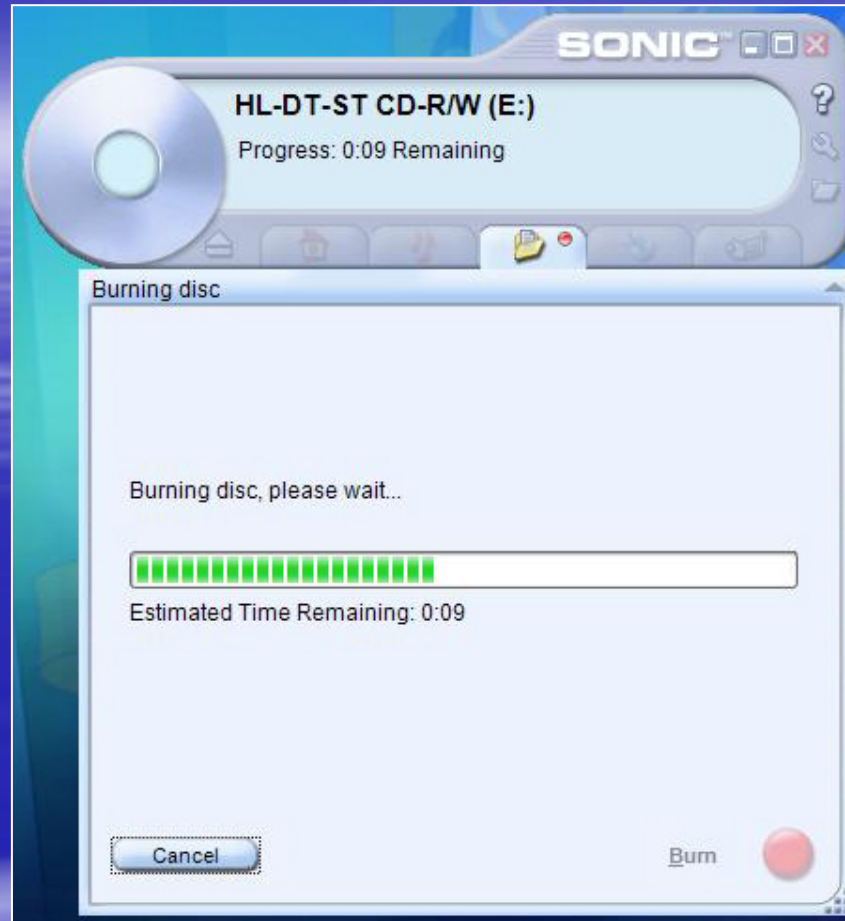
3. Click “Add Files and Folders” button to add data or folder.



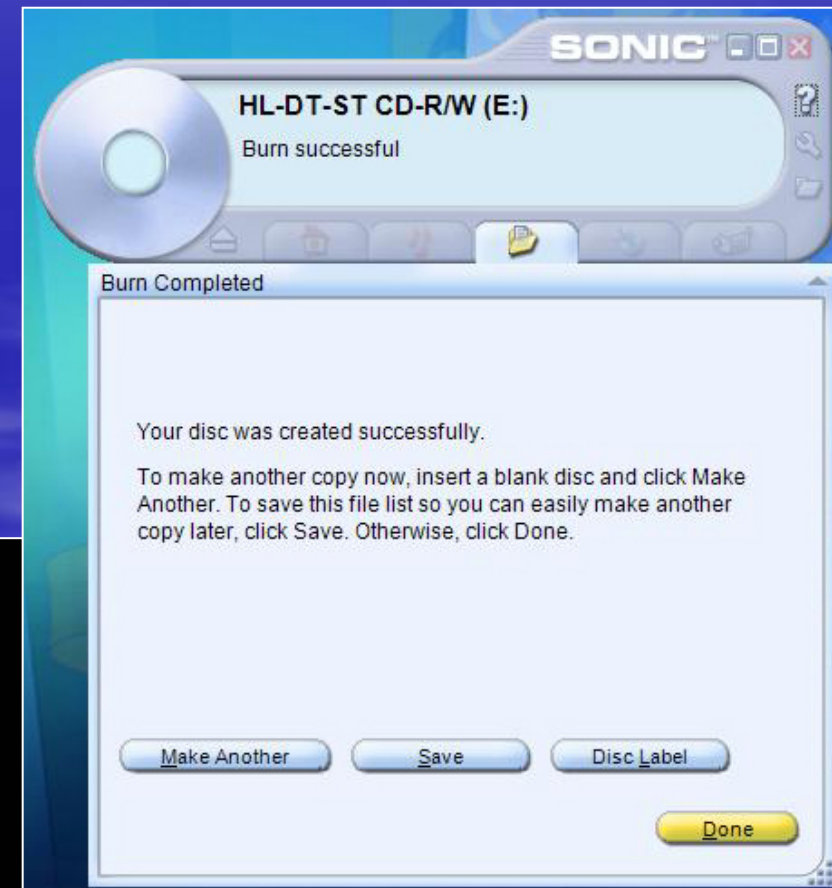
4. After add file and folder, click “Burn” button to start burn progress.



5. CD is burning in progress.



6. If the burn progress is successful, the CD will eject automatically. Click "Done" button to end the burn progress.



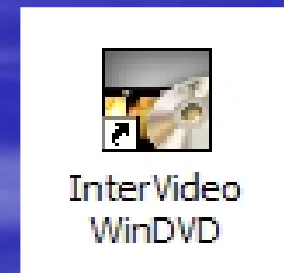
Using InterVideo WinDVD to play VCD/DVD (Demo)

Using InterVideo WinDVD to playback VCD

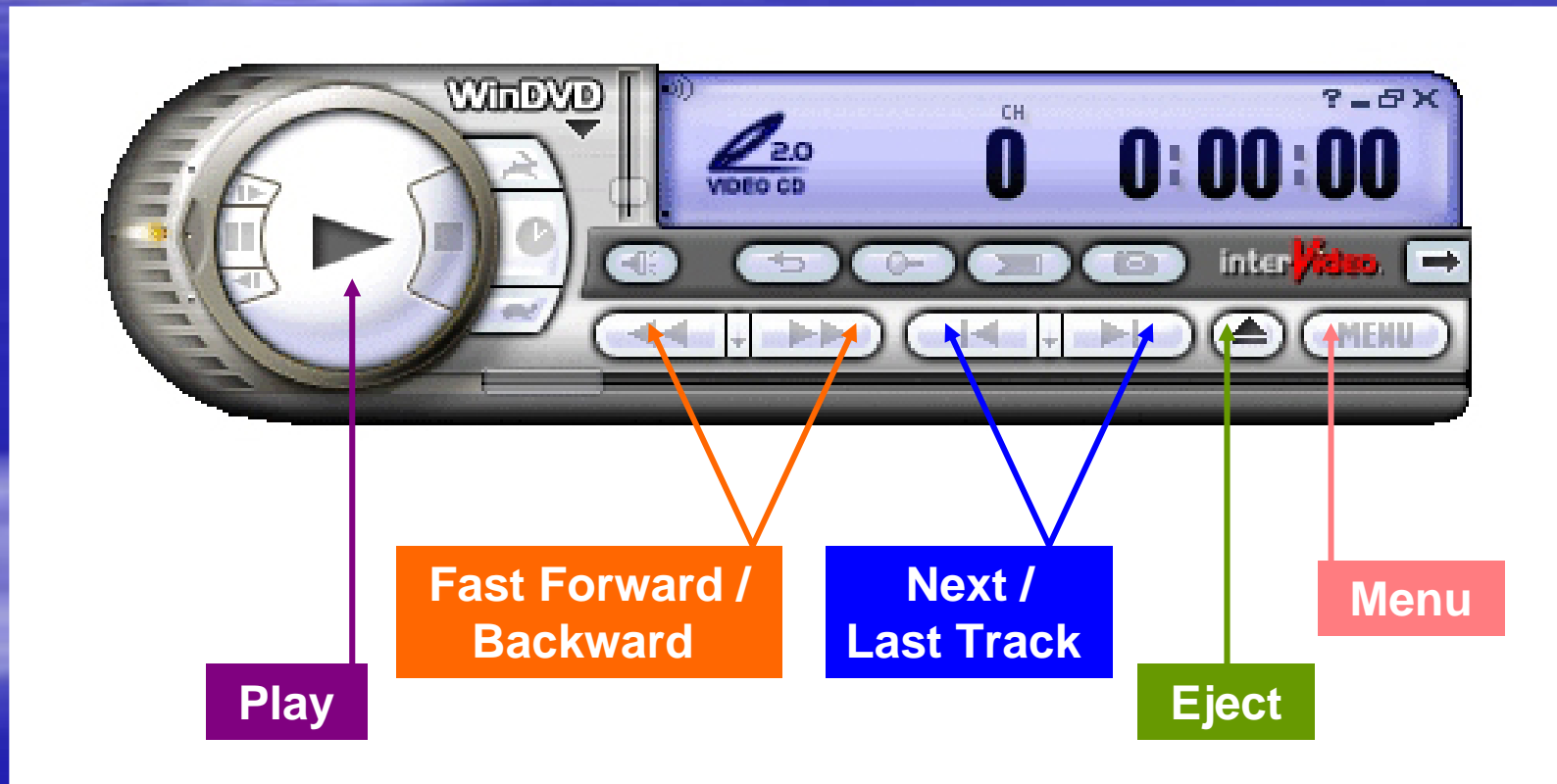
1. Insert the VCD in the DVD ROM device.



2. Double click the InterVideo WinDVD
icon and it will play automatically.

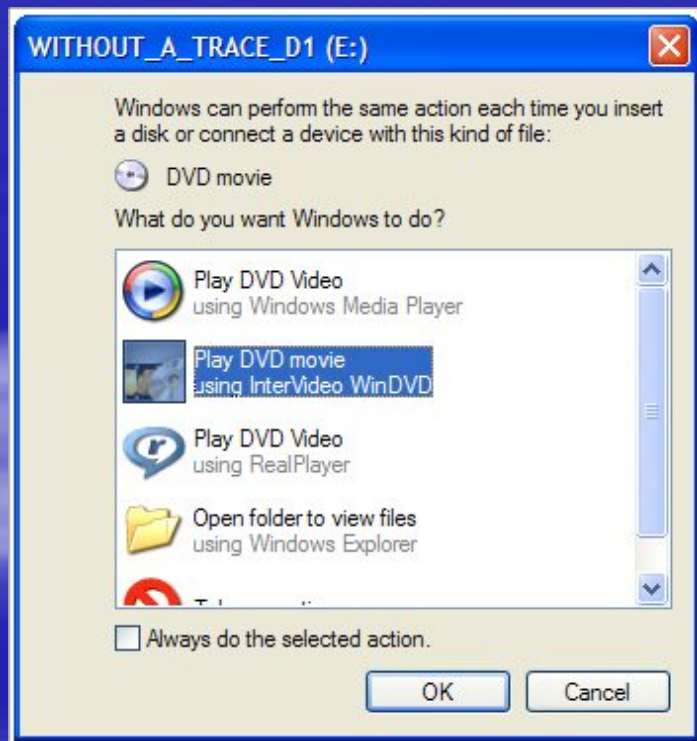


Control panel of InterVideo WinDVD



Using InterVideo WinDVD to playback DVD

1. Insert the DVD in the DVD ROM device.



2. A select software windows will show up. Choose "Play DVD movie using InterVideo WinDVD" and click OK. It will playing the DVD automatically.

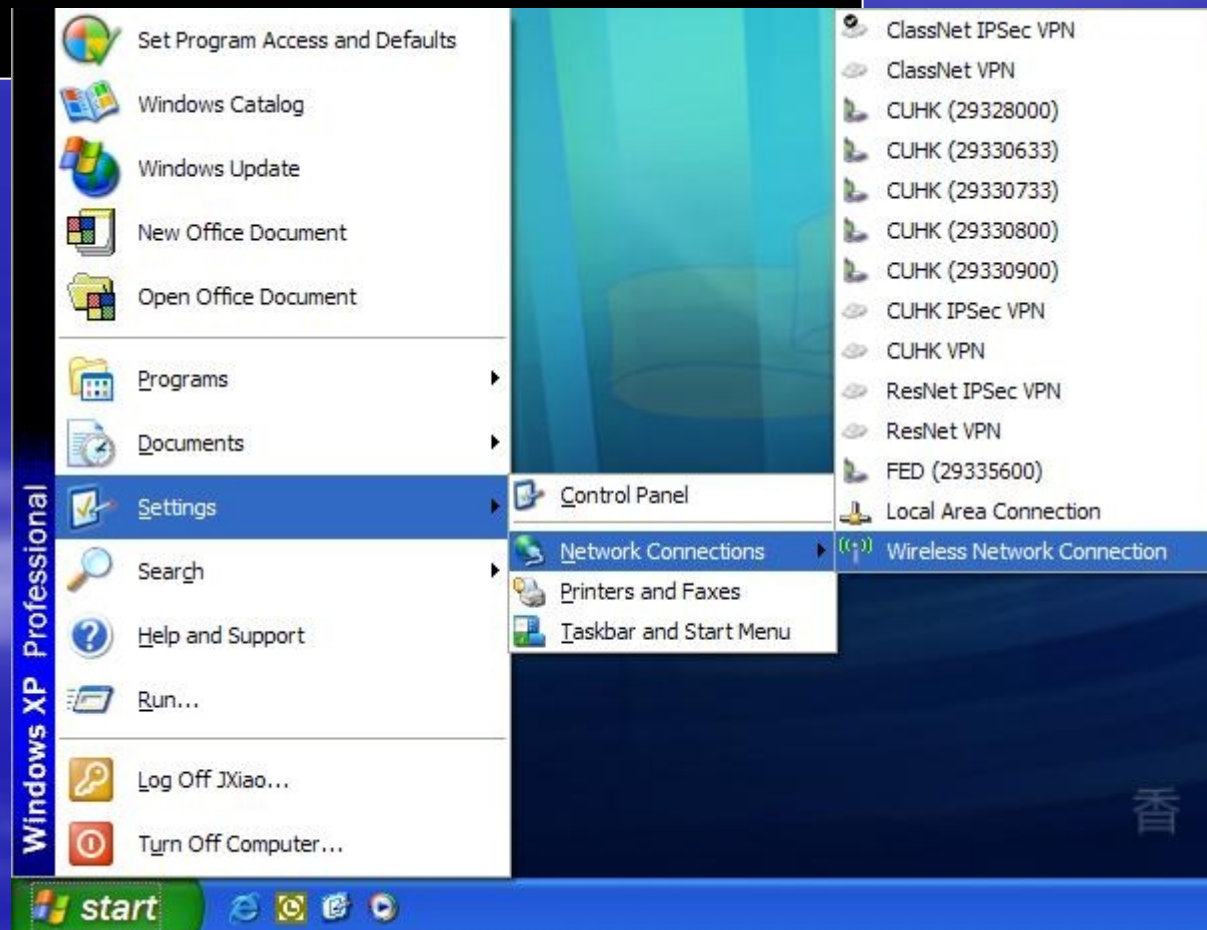
Using wireless LAN in HTB 301 (HTB 201 and HTB 213) (Demo)

Terms and Concept

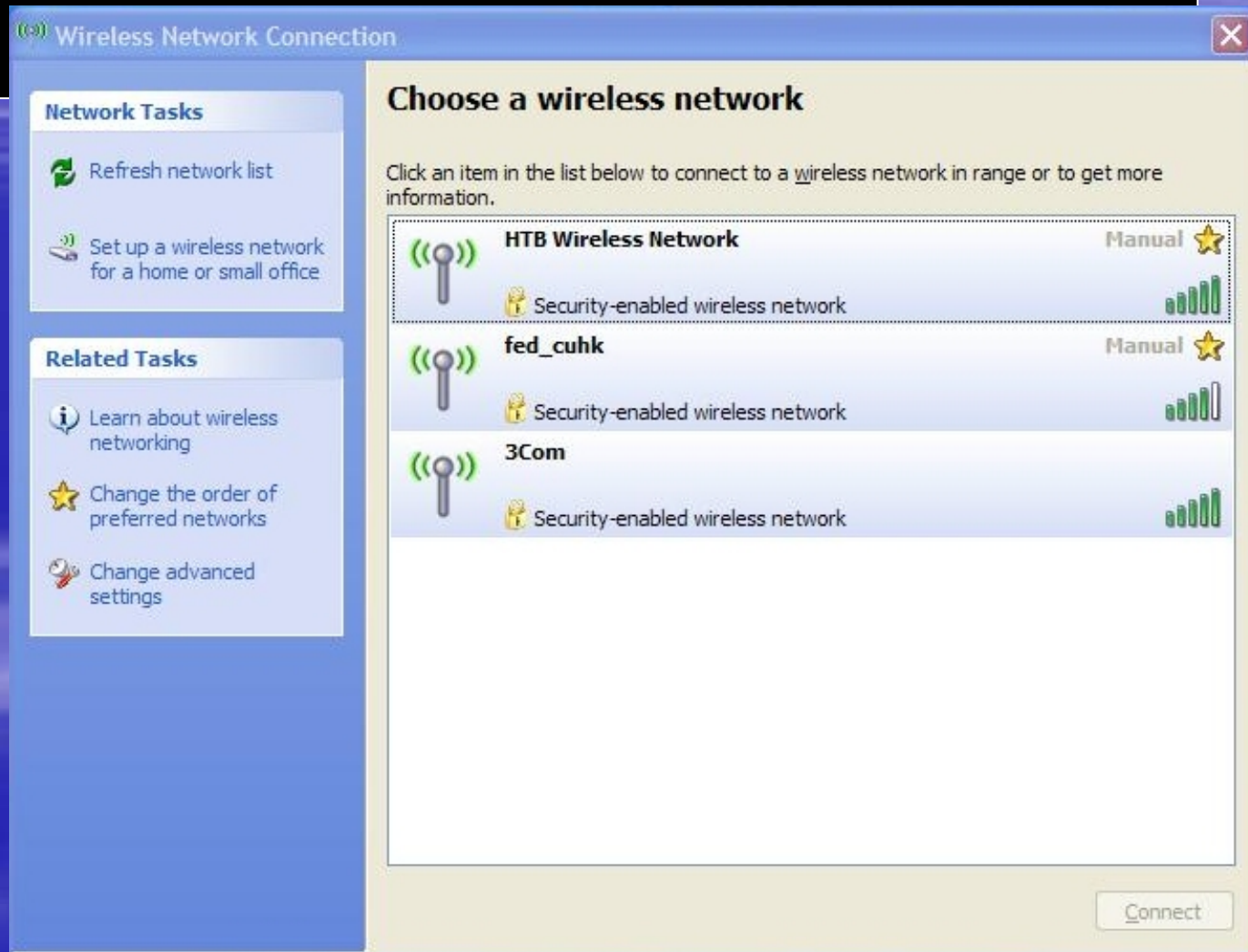
- Wireless LAN
 - Speed (about 54Mbps)
 - Signal (Distance about 5 to 10M, Wave)
 - Security
- Classnet/VPN/Resnet
 - Classnet at lecture room (Wired)
 - Classnet at library (Wireless)
 - VPN and Resnet

Setup wireless network for Ho Tim Buld.

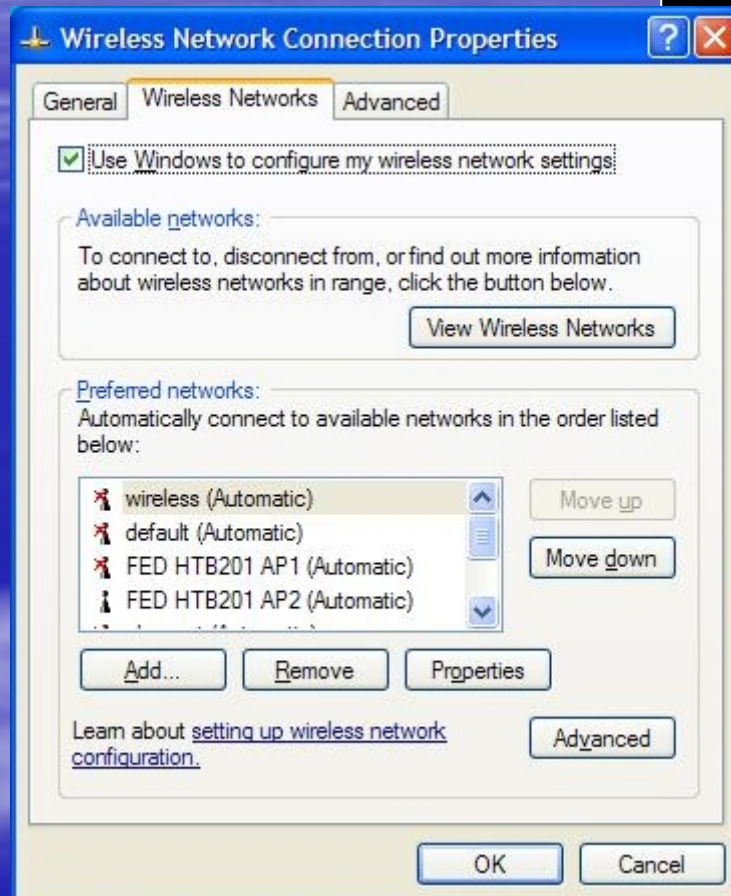
Click “Start” -> “Settings” -> “Network Connections” -> “Wireless Network Connection”



A Wireless Network Connection window will show up. Click “Change advanced settings” which is located at left-hand-side.



A Wireless Network Connection Properties will show up. Choose the Wireless Network and click Add button.



A Wireless network properties will show up. Type follow information in the windows :

Network name (SSID):

HTB Wireless Network

Network Authentication :

Open

Data encryption :

WEP

The Key provided for me automatically :

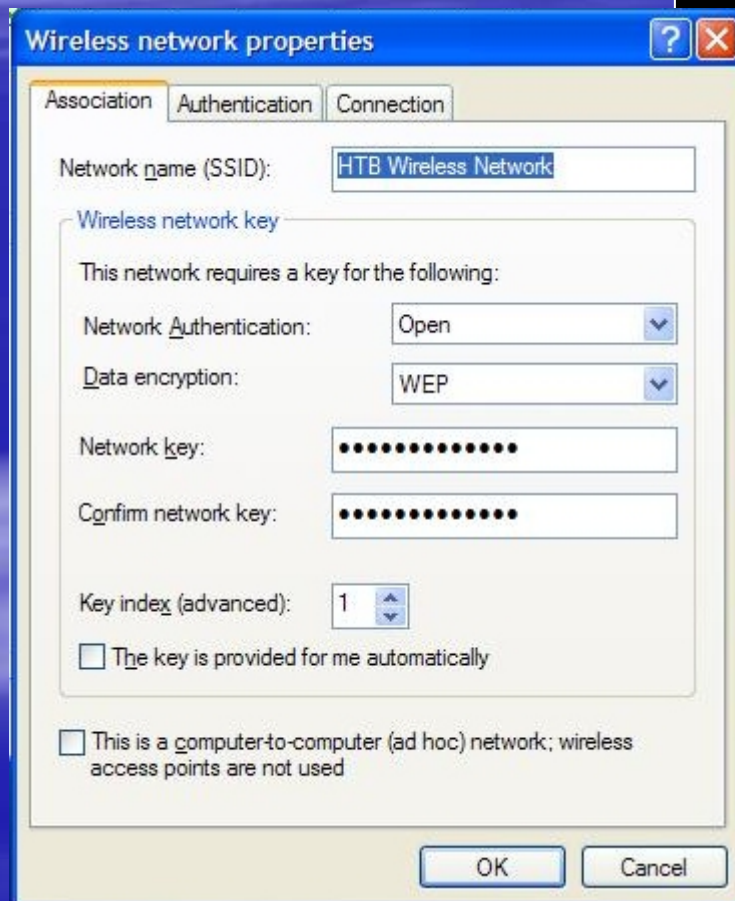
Un-Check

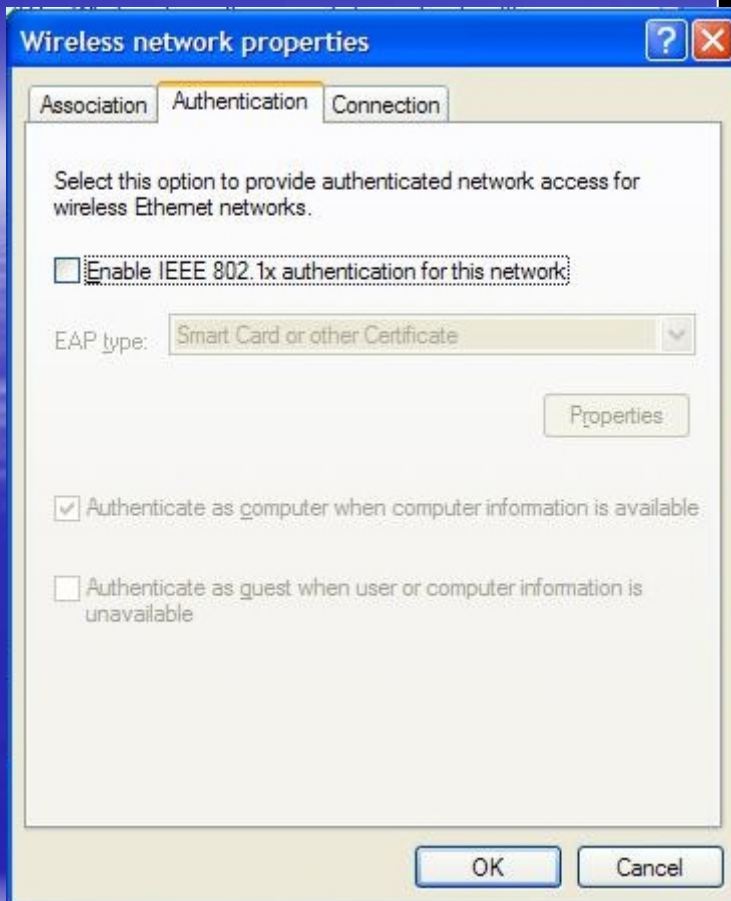
Network key :

hotimwireless

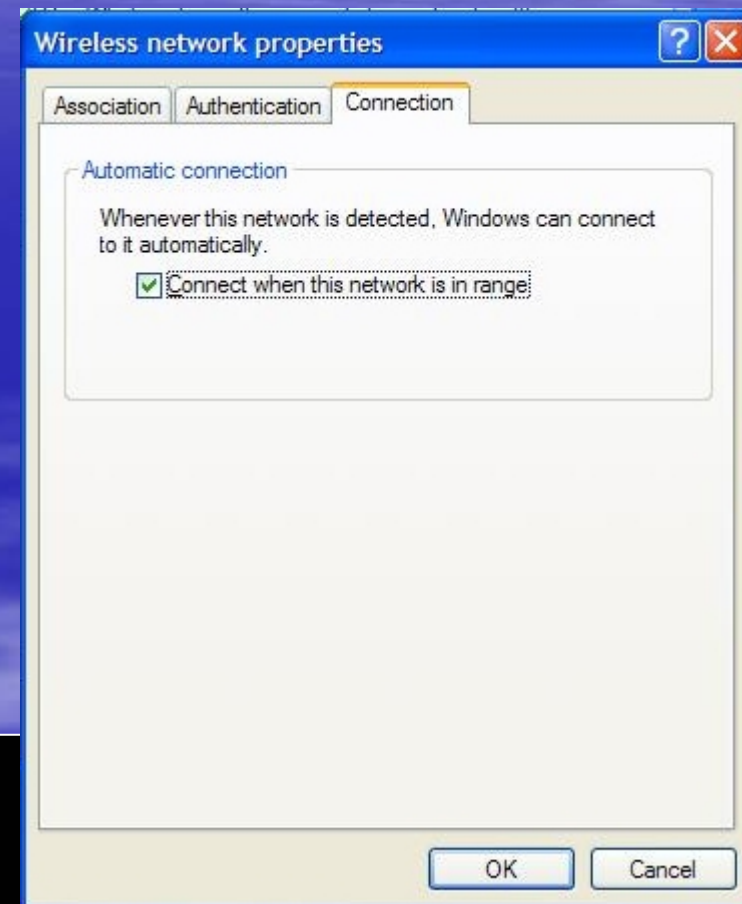
Confirm network key :

hotimwireless





In Authentication tab. Un-Check Enable IEEE 802.1x authentication for this network



In Connection Tab, Check the box of Connect when this network is in range

After this setup, the notebook can connect to the wireless LAN of Ho Tim Build. automatically whenever the network is detected.

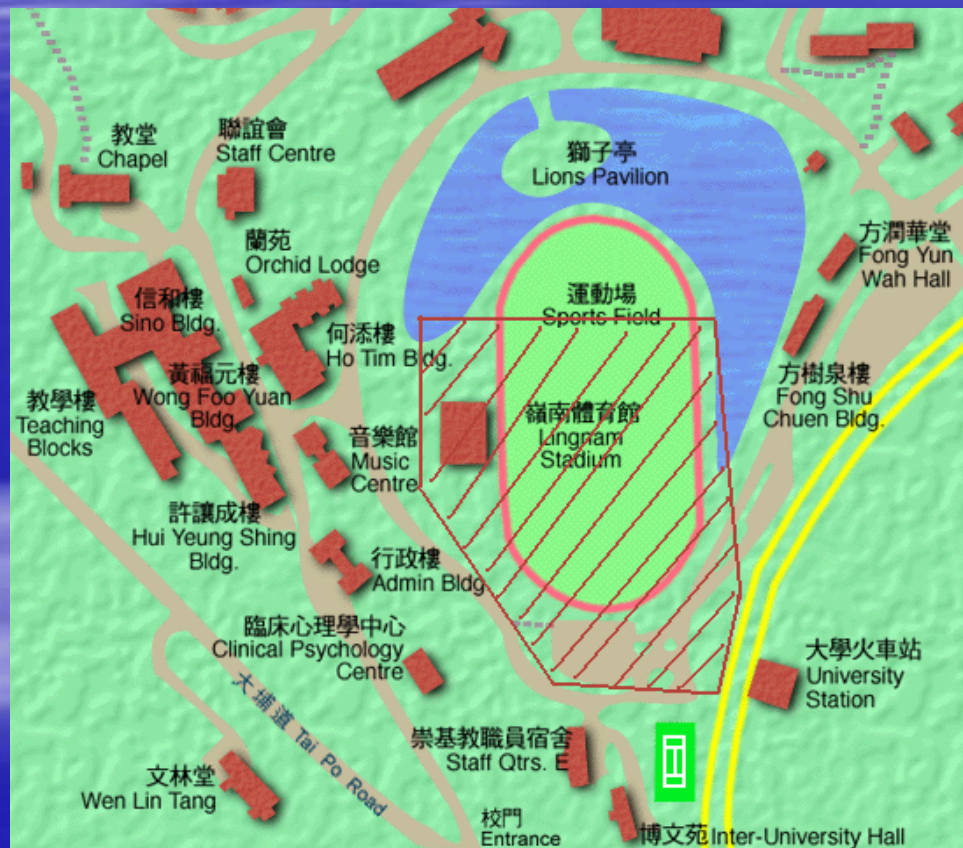
Schedule

- Location : HTB 201, HTB 213 and HTB 301
- Completion date : 10-Apr-06

How to use wireless LAN in the CU campus (Classnet/Resnet/VPN)

Coverage of Wireless LAN in CU Campus

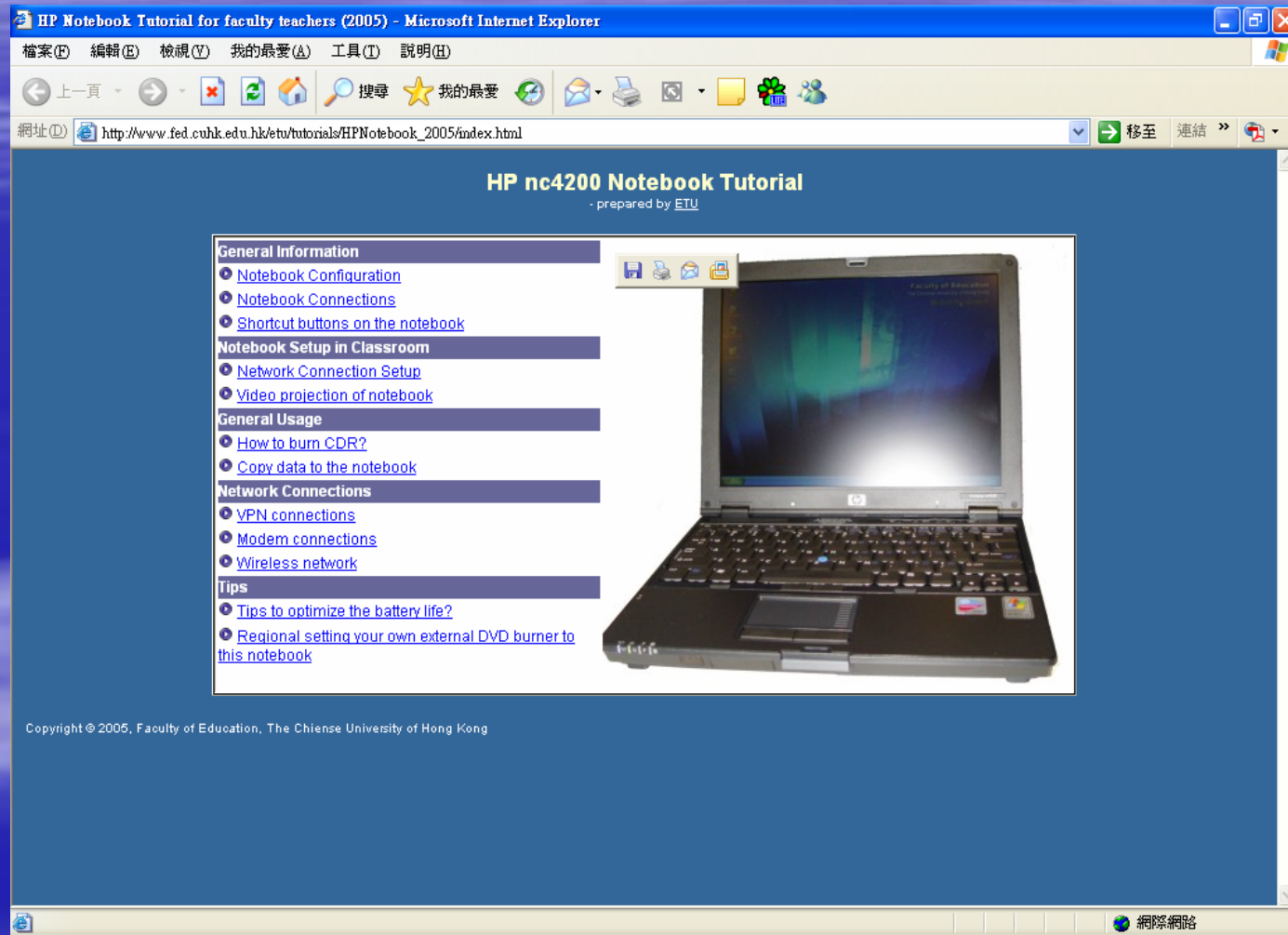
<http://www.cuhk.edu.hk/itsc/network/wlan/coverage.html>



Use wireless LAN in the CU campus

- Once the wireless of the notebook is ON, the campus wireless LAN will be detected automatically. Next, you should login to ClassNet by using your own CWEM. AT last, you can connect to the Internet.
- Step to use ClassNet (Wired/Wireless)

http://www.fed.cuhk.edu.hk/etu/tutorials/ HPNotebook_2005



HP Notebook Tutorial for faculty teachers (2005) - Microsoft Internet Explorer

檔案(F) 編輯(E) 檢視(V) 我的最愛(A) 工具(T) 說明(H)

← 上一頁 → 刷新 主页 搜索 我的最爱 打印 发送邮件 收藏夹 任务栏

網址(D) http://www.fed.cuhk.edu.hk/etu/tutorials/HPNotebook_2005/index.html 移至 連結 >>

HP nc4200 Notebook Tutorial

- prepared by ETU

- General Information**
 - [Notebook Configuration](#)
 - [Notebook Connections](#)
 - [Shortcut buttons on the notebook](#)
- Notebook Setup in Classroom**
 - [Network Connection Setup](#)
 - [Video projection of notebook](#)
- General Usage**
 - [How to burn CDR?](#)
 - [Copy data to the notebook](#)
- Network Connections**
 - [VPN connections](#)
 - [Modem connections](#)
 - [Wireless network](#)
- Tips**
 - [Tips to optimize the battery life?](#)
 - [Regional setting your own external DVD burner to this notebook](#)

Copyright © 2005, Faculty of Education, The Chinese University of Hong Kong

網路網路

Thank you for
your coming