



结构方程模型及其应用
Structural Equation Model and Its Applications

XII 读取SPSS数据

XII Reading SPSS data

侯傑泰(侯杰泰)

Kit-Tai Hau

香港中文大学教育心理系

**Educational Psychology Dept,
The Chinese University of Hong Kong**

使用时请着明出处

Reading Data from SPSS



1. in SPSS (to create .sav file)

- use compute, recode, etc. edit data
- **save only the variables to be used** in LISREL as file1.sav (<filename>.sav) and rearrange the order of variables if necessary

e.g.

```
save outfile="c:\my documents\SEM\file1.sav"/  
keep=v3,v6,v7,v9 to v13,v20.
```

2. in LISREL (to create .psf file)

- Click **"FILE"** -> **"Import External Data in Other Formats"**
- for "File of type:", select **"SPSS for Windows (*.sav)"**; select "file1.sav" from the appropriate directory
- save as **file1.psf** (or other file name); should see a spreadsheet now



3. in LISREL (to use .psf in .ls8 file)

- click “File”, “New” (or “Open an old-file name”)
- Read in the raw data (in .psf) using “RA command” e.g., in the p1.ls8 file:

DA NI=9 MA=CM

RA=file1.psf

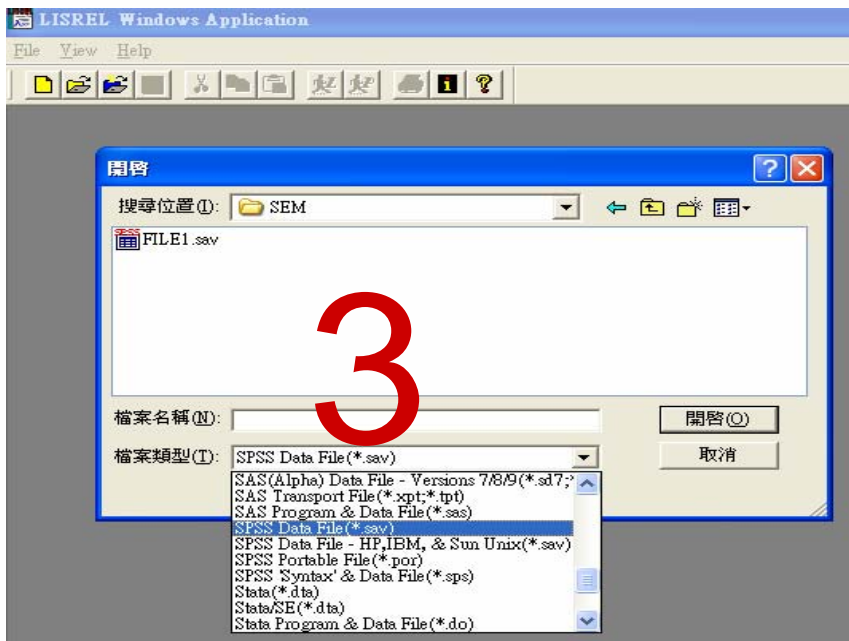
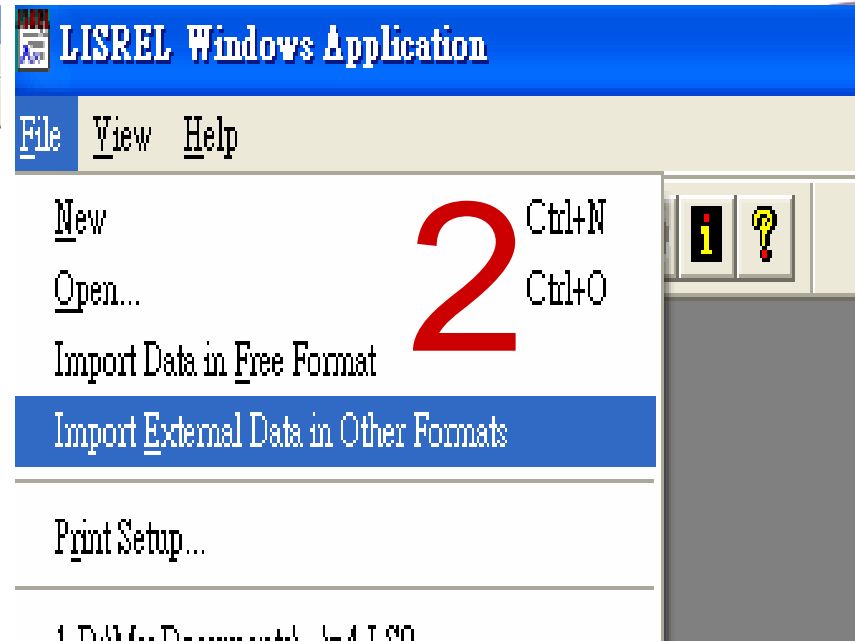
MO NX=9 NK=3.....

OU

- Note:
 - still need the “DA command”
 - No need to specify “NO=...”(no. of subjects); all cases from the *.psf will be used irrespective of the NO specification
 - No need to specify variable labels “LA.....”
 - Mean, SD, KM and CM are available from the .psf file
 - No path is needed if the .psf and .ls8 are in the same directory
- save the file as p1.ls8 (<filename>.ls8)
- Click “run LISREL”



```
compute v3=v3*1.5+2.
save outfile='c:\My Documents\SEM\file1.sav'
/keep=v3,v6,v7,v9 10 v11 v12 v13,v20.
```



LISREL Windows Application - File1.psf

File Edit Data Transformation Statistics Graphs Multilevel SurveyGLIM View Window

File 1.psf

| | V3 | V6 | V7 | V9 |
|----|-------|-------|-------|-------|
| 1 | 2.000 | 1.000 | 0.000 | 0.000 |
| 2 | 2.000 | 0.000 | 2.000 | 0.000 |
| 3 | 3.000 | 2.000 | 1.000 | 1.000 |
| 4 | 3.000 | 3.000 | 2.000 | 2.000 |
| 5 | 2.000 | 2.000 | 2.000 | 2.000 |
| 6 | 1.000 | 1.000 | 2.000 | 1.000 |
| 7 | 2.000 | 2.000 | 0.000 | 0.000 |
| 8 | 3.000 | 2.000 | 2.000 | 2.000 |
| 9 | 3.000 | 2.000 | 3.000 | 3.000 |
| 10 | 3.000 | 3.000 | 3.000 | 2.000 |
| 11 | 3.000 | 3.000 | 2.000 | 0.000 |
| 12 | 3.000 | 3.000 | 3.000 | 3.000 |

LISREL Windows Application - File1.psf

File Edit Data Transformation Statistics Graphs Multilevel SurveyGLIM

New Ctrl+N
 Open... Ctrl+O
 Import Data in Free Format...
 Import External Data in Other Formats
 Export LISREL Data...
 Close
 Save Ctrl+S
 Save As...
 Print... Ctrl+P
 Print Preview
 Print Setup...
 1 File1.psf

LISREL Windows Application - File1.psf

File Edit Data Transformation Statistics Graphs Multilevel Survey

開啓新檔

開啓新檔(N)

Syntax Only
 Output
 PRELIS Data
 SIMPLIS Project
 LISREL Project

確定
 取消

| | V7 |
|---|-------|
| 5 | 2.000 |
| 6 | 1.000 |
| 7 | 2.000 |

LISREL Windows Application - [SYNTAX1]

File Edit Options Window Help

Run LISREL

DA NI=9 MA=CM
 RA=file1.psf
 MO NX=9 NK=3 PR=ST TD=SY
 FR LX 1 1 LX 2 1 LX 3 1 LX 4 2 LX 5 2 LX 6 2
 FR LX 7 3 LX 8 2 LX 9 2
 OU
 *