



PH.D & M. PHIL

Research Postgraduate Programmes

2020-21



EMPOWER
INNOVATE
TRANSFORM



FACULTY OF EDUCATION

The Faculty of Education is a community of faculty members, students and staff members who are passionate about improving education for our children, and who are committed to serving and leading the education community through teaching and instruction, innovative research endeavours and timely development and service projects.





MISSION

With commitment, the Faculty strives to:

- nurture dedicated professionals and competent researchers in the field of education through its programmes of study;
- initiate research activities of import that facilitate theory-building, shape professional practice and inform policy making in education;
- engage with schools and the community in developing endeavours that enhance the learning and growth opportunities of students of all ages;
- offer consultancy and development services to governments and non-official bodies in activities of local, national and international significance; and
- serve as a source of inspiration and wisdom for students, alumni, teachers and clients by developing a vibrant academic community that celebrates collegiality, diversity, innovation and experimentation.

VISION

The Faculty of Education, as a leading centre in educational studies and professional education, seeks to develop a vibrant academic community through dedication,

dialogue and leadership in teaching, research and public service that will enhance its contribution to the education profession, the scholarly community, schools and societies in Hong Kong, the Greater China region, as well as to the international community.

RESEARCH

The Faculty of Education has become a vibrant and productive research centre in Hong Kong through scholar-practitioner collaboration, serving the education sector through informed experimentation and strategic actions and the internationalisation of education scholarship. The Faculty's four academic departments – Curriculum and Instruction, Educational Administration and Policy, Educational Psychology and Sports Science and Physical Education – conduct a wide range of research programmes to address issues that are salient to education in local and international settings, generate knowledge that informs educational policy and practice and develop interventions that aim to improve school functioning and student learning. These research programmes also provide valuable opportunities for our Ph.D students to engage in and contribute to the scholarly pursuit for the advancement of knowledge and improvement of educational practices.

INTRODUCTION TO THE RESEARCH POSTGRADUATE PROGRAMMES

The research postgraduate programmes are significant part of CUHK Faculty of Education's mission to nurture younger generations of educational researchers and leaders locally and regionally. The Faculty has offered the **Doctor of Philosophy (Ph.D) Degree Programme** since 1990. The Ph.D is a research doctorate to be completed mainly through individual guided study with required coursework of research methodology courses. The Ph.D programme aims to provide the opportunity for promising individuals to pursue intensive specialisation in a specified area of educational studies.

Full-time Ph.D students will receive a postgraduate studentship during normative study period and the monthly stipend ranges from HK\$17,330 to HK\$17,810 for 2019 - 2020.

To facilitate research and scholarship that synthesise Eastern and Western perspectives, the University supports Ph.D students to undertake overseas exchange activities. Full-time Ph.D students can apply for the CUHK Postgraduate Grants for Overseas Academic Activities for presenting

papers in international conferences and conducting field trips in relation to their thesis studies. The Global Scholarship Programme for Research Excellence and the Ph.D Student Exchange Programme offer the opportunities for full-time Ph.D students to undertake three to six months of research visits at a selected group of leading research institutions overseas. A number of Ph.D students of the Faculty have visited the University of Utrecht (Netherlands), Brown University (USA), Penn State University (USA), University of Chicago (USA), University of Alberta (Canada), and University of Auckland (New Zealand) via the above schemes.

The **Master of Philosophy (M.Phil) Degree Programme** is also a research-oriented programme to provide initial research training for the students who can demonstrate their research capability and plan to pursue further studies.

Full-time M.Phil students will receive a postgraduate studentship during normative study period and the monthly stipend is HK\$17,330 for 2019 - 2020.



THE DOCTOR OF PHILOSOPHY PROGRAMME

Graduates of the Doctor of Philosophy Degree (Ph.D) programme have filled key positions as educational researchers and professional educators in the school and tertiary education sectors in both Hong Kong and mainland China. The Ph.D programme's emphasis on conceptual originality, academic rigour and critical inquiry is widely recognised throughout the education profession.

The Ph.D is a research doctorate to be completed mainly through individual guided study with some supplementary coursework.

GENERAL QUALIFICATIONS FOR ADMISSION

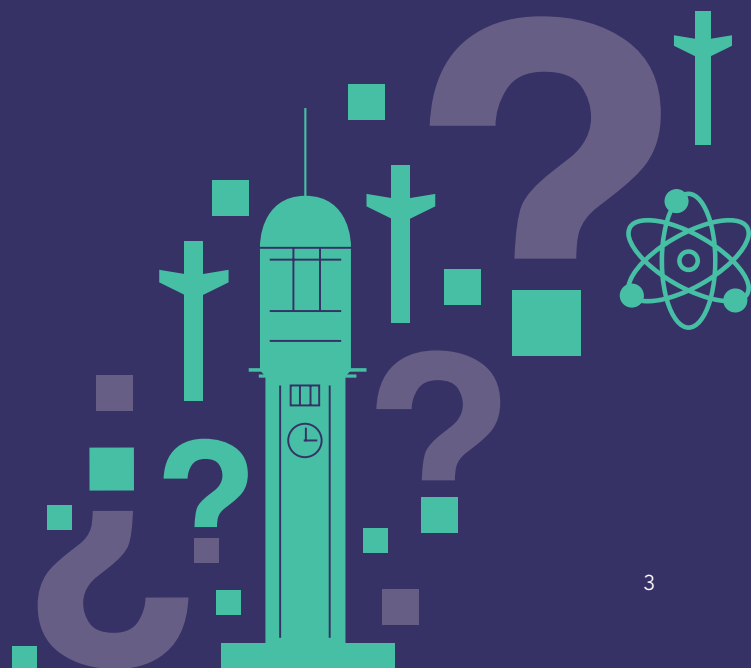
Applicants should fulfil the following requirements for admission:

- hold the following degree or academic qualifications:
 - a Master's degree from a recognised university; or
 - a Bachelor's degree, normally with Second Class Honours in the upper division or above, and have been registered in a course of study for a Master's degree at this University for at least one year and have demonstrated research ability; or
 - have been registered in a course of study for a doctoral degree at a recognised university for at least one year, and have been approved for admission by the Graduate Council.
- have obtained the Postgraduate Diploma in Education, or equivalent education qualification, and / or relevant experience deemed acceptable;
- furnish proof of their research ability in the form of past publications, Master's thesis, and / or strong support from academic referees;
- perform satisfactorily in an interview conducted by the Graduate Division of Education;
- pass a written entrance examination conducted by the Graduate Division of Education, if necessary;
- fulfil the "English Language Proficiency Requirement" as stipulated by the Graduate School. Please refer to the "Postgraduate Prospectus 2020 - 2021" or webpage: www.gs.cuhk.edu.hk for details on this requirement.

NOTES FOR APPLICANTS

Applicants should choose the area of study they wish to apply in the "Field of Study" box on the application form, and submit it with a paper on "Objectives and Outline of Study" in Chinese or English. The contents of the paper should include:

- the applicant's reasons for choosing the specialised area of study;
- demonstration of a basic understanding of key concepts in the specialised area of study by citing learning and working experiences as well as relevant literature; and
- two proposed topics in the specialised area of study which are worthy of research. For one of the topics, a concise research proposal should be provided. For the other, simply state the title and a brief description.



AREAS OF STUDY

CURRICULUM AND INSTRUCTION

The Department of Curriculum and Instruction provides Ph.D students with the opportunity to pursue academic research on issues relating to curriculum theory, school subjects and programmes, teaching methods and assessment in education. One area of research that the faculty members emphasise is understanding the effects of curriculum reforms on student learning. Faculty members also investigate the factors affecting curriculum development and pedagogy in schools. In recent years, some of the department's externally funded projects have focused on language deployment in secondary school education, teacher efficacy and psychological well-being, blended learning and students' interest in school science.

The Ph.D programme may be undertaken in the department's principal areas of research, including instructional design, curriculum reform and implementation, curriculum evaluation, assessment in education, Chinese language education, English language education, mathematics education, science education, information and communication technology in education, liberal studies and other relevant areas.

EDUCATIONAL ADMINISTRATION AND POLICY

The Department of Educational Administration and Policy admits candidates for the Ph.D programme who seek to improve education policies and leadership practices at both the system and organisational levels, and who commit to improving the quality of education through engaging in scholarly inquiry across a broad range of areas of research. These research areas include the foundation disciplines for educational inquires in sociology, philosophy, economics, comparative education, policy studies, educational leadership, management and administration, along with educational issues and development in sectors such as early childhood education, elementary education, higher education and education in Chinese societies.

EDUCATIONAL PSYCHOLOGY

Faculty members of the Department of Educational Psychology pursue active research in four broad areas of the discipline. These include (1) Cognition and Learning, encompassing themes such as attention and perception, embodied cognition, memory and executive functioning, problem solving and metacognitive and motivational processes in learning; (2) Child and Adolescent Development in Diversified Domains (e.g., cognitive, moral, aesthetic, social, affective and self), including an inquiry into parenting and other acculturation influences on the developmental processes; (3) Counselling and Guidance, covering career counselling and life-planning and interventions in special educational needs; and (4) Applied Psychometrics and Statistics, involving psychological and educational testing and modelling and the assessment of classroom learning. Within these broad areas of research, individual faculty members conduct not only applied research in reading, mathematics learning, e-learning, creative thinking and mental health, but also basic research in gesture and language processing, emotion science and cultural-historical psychology.

SPORTS SCIENCE AND PHYSICAL EDUCATION

The Programme reflects the mission of the Department of Sports Science and Physical Education and is based on the assumption that physical activity is a type of health-related behaviour that influences the health and well-being of individuals. From this perspective, research students can study physical activity (including sports) using a biomechanical, pedagogical, physiological, psychological or sociological approach. All of the research conducted in the Department is focused on physical activity and sport in terms of its contribution to related fields of school physical education, sports medicine health and science.

Areas of investigation include the pedagogy of physical education and sport, curriculum policy, design and implementation in sports and physical education; health and fitness; measurement in physical education and sports; sports and exercise physiology; sports and exercise psychology, sports sociology and sports biomechanics.

STUDY SCHEME



Coursework Requirements

- a. Students are required to complete 6 units of research methodology courses, including either PEDU7301 or PEDU7302, and attain an average grade "B" or above.
- b. PEDU8000 is a thesis monitoring course. Students are required to take PEDU8000 every term from the time of admission, throughout the preparation of thesis, until its completion.



Qualifying Examination

The qualifying examination will consist of two parts: the student's field of specialisation and one related field or a more narrowly defined sub-field within the student's field of specialisation. Examinations could be conducted in sit-in or take-home format, or other format.

Students will be granted Ph.D candidature upon completion of coursework requirements and passing of the qualifying examination.



Attending Ph.D Programme Annual Seminars / Doctoral Thesis Proposal Presentations



Other Requirements

- a. Students must fulfil the Term Assessment Requirement of the Graduate School. For details, please refer to Section 13.0 "Unsatisfactory Performance and Discontinuation of Studies" of the General Regulations Governing Postgraduate Studies which can be accessed from the Graduate School Homepage: www.gs.cuhk.edu.hk.
- b. A student must achieve a cumulative grade point average (GPA) of at least 2.0 in order to fulfil the graduation requirement.
- c. Students are required to submit a research thesis and pass an oral examination for graduation.
- d. Each Ph.D student is required to present a research seminar at least once a year before the advancement to Ph.D candidature, and to submit an annual progress report to his / her supervisor. The supervisor, in consultation with the Graduate Panel, will review annually the progress of the student.
- e. Within twelve months after advancement to Ph.D candidature, the candidate must submit a thesis proposal. After the thesis proposal has been approved, the candidate should, under the supervision of his / her supervisor, submit a thesis and pass the oral examination within a prescribed period of time for graduation.
- f. Complete an Improving Postgraduate Learning (IPL) module "Observing Intellectual Property and Copyright Law during Research". This will be an online module and relevant information can be accessed from the webpage: www.cuhk.edu.hk/clear/prodev/ipl.html.
- g. Students are required to complete an online Research Ethics Training (RET) module on "Publication Ethics" offered by the Office of Research and Knowledge Transfer Services (ORKTS) and obtain a valid Publication Ethics Certificate for graduation. Relevant information can be accessed from the RET website at <https://www.research-ethics.cuhk.edu.hk/web/>.

CLASS SCHEDULE

There are two terms per academic year. Term 1 is from September to December, and Term 2 from January to April. The Faculty will offer summer courses in July and August. Except summer courses, classes are usually offered on weekday evenings and on Saturday mornings.

PERIOD OF STUDY

For students with a research Master's degree

Full-time programme: 36 months (maximum 84 months)

Part-time programme: 48 months (maximum 96 months)

For students without a research Master's degree

Full-time programme: 48 months (maximum 84 months)

Part-time programme: 64 months (maximum 96 months)

TUITION FEE

HK\$42,100 per annum

(For Full-time and Part-time Programme)

APPLICATION DEADLINE

31 January 2020

COMMENCEMENT OF CLASSES

September 2020



THE MASTER OF PHILOSOPHY PROGRAMME

The Master of Philosophy (M.Phil) Degree Programme is designed to provide students the initial research training to enhance their academic and personal development through the study of a topic relevant to their interests.

GENERAL QUALIFICATIONS FOR ADMISSION

Applicants should fulfil the following requirements for admission:

1. hold the following degree or academic qualifications:
 - graduated from a recognised university and obtained a Bachelor's degree, normally with honours not lower than Second Class; or
 - graduated from an honours programme of a recognised university with a Bachelor's degree, normally achieving an average grade of not lower than "B"; or
 - completed a course of study in a tertiary educational institution and obtained professional or similar qualifications equivalent to an honours degree.
2. have obtained the Postgraduate Diploma in Education, or equivalent education qualification, and / or relevant experience deemed acceptable;
3. pass an entrance examination or interview conducted by the Graduate Division of Education;
4. fulfil the "English Language Proficiency Requirement" as stipulated by the Graduate School. Please refer to the "Postgraduate Prospectus 2020 - 2021" or webpage: www.gs.cuhk.edu.hk for details on this requirement.

NOTES FOR APPLICANTS

Applicants should choose the specialisation they wish to apply in the "Field of Study" box on the application form (specialisations include: Curriculum and Instruction, Educational Administration and Policy, Educational Psychology, and Sports Science and Physical Education), and submit it with a paper on "Objectives and Outline of Study" in Chinese or English. The contents of the paper should include:

- the applicant's reasons for choosing the area of study;
- demonstration of a basic understanding of the area of study;
- learning and working experiences that are relevant to their pursuits; and
- two proposed topics which are worthy of research. For one of the topics, a concise research proposal should be provided. For the other, simply state the title and a brief description.

PROGRAMME REQUIREMENTS

Students are required to complete 6 units of required courses and 3 units of elective courses on "Methods of Educational Research", conduct an independent research, submit a thesis and pass the oral defence. In consultation with their supervisors, they may take other credit-earning courses which are relevant to their defined areas of study.



AREAS OF STUDY

- Curriculum and Instruction
- Educational Administration and Policy
- Educational Psychology
- Sports Science and Physical Education

STUDY SCHEME



Coursework Requirements

- a. Students are required to complete a minimum of 9 units of courses for graduation.
- (i) Required Courses 6 units
 - (ii) Elective Courses 3 units

Total : 9 units

b. PEDU8090

PEDU8090 is a thesis monitoring course. Students are required to take PEDU8090 every term from the time of admission, throughout the preparation of thesis, until its completion.



Other requirements

- a. Students must fulfil the Term Assessment Requirement of the Graduate School. For details, please refer to Section 13.0 “Unsatisfactory Performance and Discontinuation of Studies” of the General Regulations Governing Postgraduate Studies which can be accessed from the Graduate School Homepage: www.gs.cuhk.edu.hk.
- b. A student must achieve a cumulative grade point average (GPA) of at least 2.0 in order to fulfil the graduation requirement.
- c. Students are required to submit a research thesis and pass an oral examination for graduation.

d. Complete an Improving Postgraduate Learning (IPL) module on “Observing Intellectual Property and Copyright Law during Research”. This will be an online module and relevant information can be accessed from the webpage: www.cuhk.edu.hk/clear/prodev/ipl.html.

e. Students are required to complete an online Research Ethics Training (RET) module on “Publication Ethics” offered by the Office of Research and Knowledge Transfer Services (ORKTS) and obtain a valid Publication Ethics Certificate for graduation. Relevant information can be accessed from the RET website at <https://www.research-ethics.cuhk.edu.hk/web/>.

CLASS SCHEDULE

There are two terms per academic year. Term 1 is from September to December, and Term 2 from January to April. The Faculty will offer summer courses in July and August. Except summer courses, classes are usually offered on weekday evenings and on Saturday mornings.

PERIOD OF STUDY

Full-time programme: 2 years (maximum 4 years)

TUITION FEE

Full-time Programme: HK\$42,100 per annum

APPLICATION DEADLINE

31 January 2020

COMMENCEMENT OF CLASSES

August 2020

Enquiries

Address: Office of Postgraduate Programmes in Education,
Faculty of Education, The Chinese University of Hong Kong,
Shatin, N.T., Hong Kong

Telephone: 3943 6203

Fax: 2603 7612

Email: (Doctor of Philosophy) phd@fed.cuhk.edu.hk

(Master of Philosophy) mphil@fed.cuhk.edu.hk

Website: www.fed.cuhk.edu.hk/higherdegree



The information in relation to the higher degree programme offered by the Faculty of Education given in this leaflet is accurate at the time of printing. Changes may be made from time to time and the Faculty reserves the right to make amendment(s) to any information contained in this leaflet without prior notice.