

Rock Carvings in Hong Kong

*There are platforms (平台) in front of several of the rock carvings

*Almost all of them are found on rock outcrops (突出的大石) overlooking (俯視) a small area of water

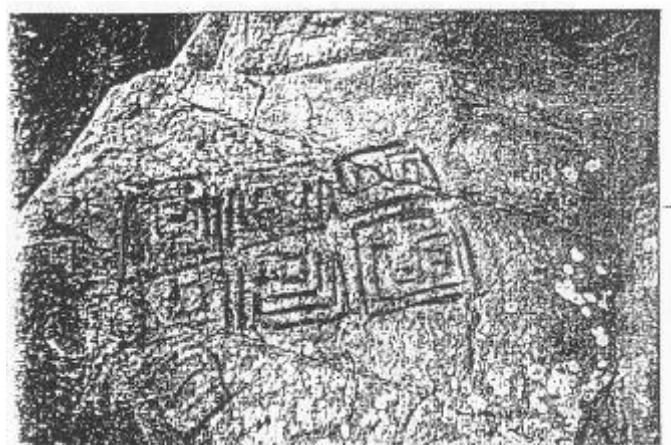
Group 1 - Shek Pik, Cheung Chau, Po Toi Island, Big Wave Bay, Kau Sai Chau, Lung Ha Wan, Wong Chuk Hang

*The patterns (圖案) on the rock carvings are like those on the Bronze (青銅) Age pottery found in Hong Kong

*Size: e.g. the rock carving at the Big Wave Bay is 90cm x 80cm



Cheung Chau



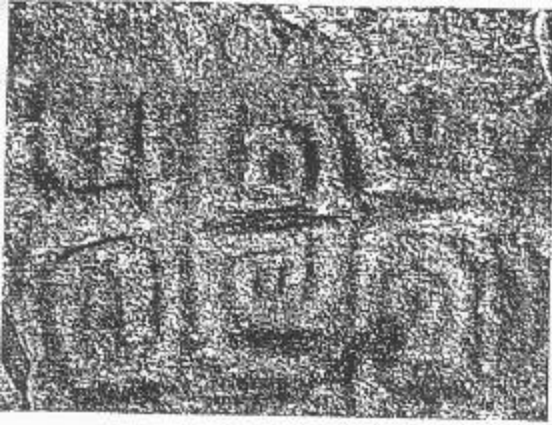
Shek Pik



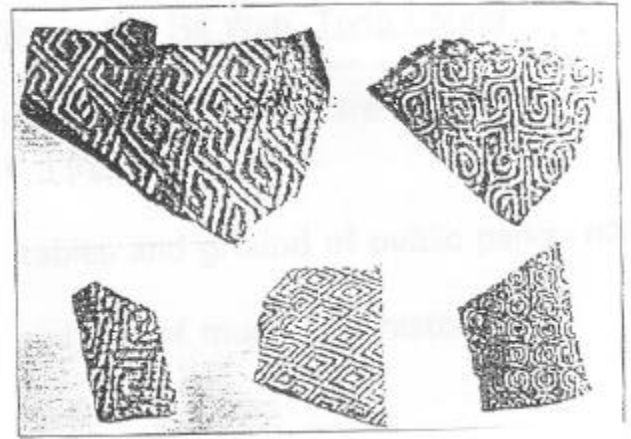
Big Wave Bay



Wong Chuk Hang



Patterns on the rock carvings



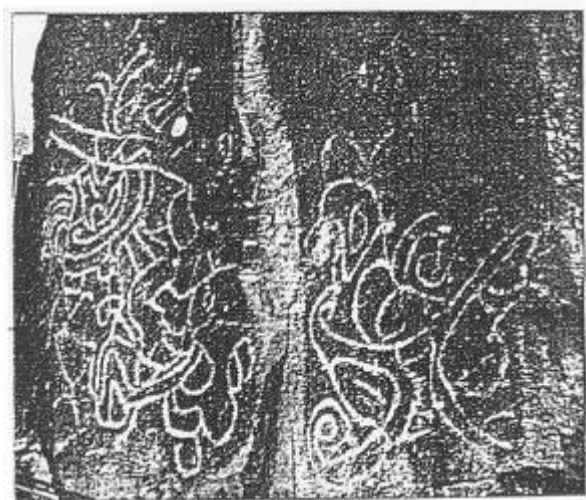
Broken pieces of clay pots on the
Bronze Age (about 3000 years old)

Group 2 - Tung Lung Chau

*There was a record in the 1819 Xin- an Gazetteer (新安地方誌) : "A dragon impression (印記) on the rock is found at Fat Tong Mun (佛堂門) ; the form of a dragon was carved on the vertical surface of the rock"

*There is a common saying that the last two boy- emperors of the Sung Dynasty (宋朝) visited the area in their flight (逃亡) south from the Mongol (蒙古) invaders (入侵者) .

*Size: 180cm x 240cm; the largest rock carving known in Hong Kong



Tung Lung Chau

Group 3 - Upper Shek Pik, Ting Kok Village, Hoi Ha Wan, Tung Chung

*Some are formed by simple grid lines (方格) . Some are formed by diagonals (對角線) and concentric (同心) squares.

*These patterns are common on the tables and ground of public parks nowadays.

*These are of more recent periods, and are of much less historical value.

